

Visit [www.manutec.com.au](http://www.manutec.com.au) for information on all of the parts available or contact Manutec for more information

OEM COMPONENTS

A large range of wheel and related components are available in OEM quantities to suit all airseeders, cultivators, disc drills, combines, row planters, tree planters, cane planters, vegetable planters, trailers, silos and any other axle/stub wheel based equipment. Manutec is also able to rapidly prototype specific parts for our customers or to manufacture after market spare parts.

## HUBS, STUBS AND AXLES

A complete range of trailer hubs, axles and stubs plus associated components is available to suit all light and medium agricultural requirements. Options include, Holden (HT, Commodore), Ford, Landcruiser and Slim line Hubs. A large range of stubs and axles are available and specific stubs can be machined to order. Galvanised steel over caps are available to suit HT, Ford and BMW pattern hubs.



## PLANTER WHEELS

Steel and hard Nylon 12" and 13" planter wheels are available for oem use or as replacement (aftermarket) parts for a variety of machines. Replacement tyres and bearings are also available, including tyres for NODET planters and 5203KYY3 bearings.



## GAUGE WHEELS

A range of 16", 18" and 24" Gauge wheels are available to suit disc planters. Gauge wheels are designed to be operated on a standard HT pattern Hub, normal HT and slim line (narrow) HT hubs and stubs are available for mounting. 18" Gauge wheels available with Integral Centre. Tyre Options include solid and semi-pneumatic variants.



## SPARE PARTS

Manutec carries a large range of spare parts for all wheel, disc, coulter and hub products. This includes replacement bearings, bushes, tyres, discs, seals, plus replacement brackets, arms or centres if required. All Manutec, wheel and disc products are designed to use compatible off the shelf replacement parts. Replacement parts are always readily available either direct from Manutec or from local suppliers.



A complete range of u-bolts, seeding units, protective rubber products, plus bearings, seals, rings and caps are available to suit all Manutec wheel products. A comprehensive set of accessories is also available to augment the performance of Manutec assembly products.

AFTER MARKET SPARES

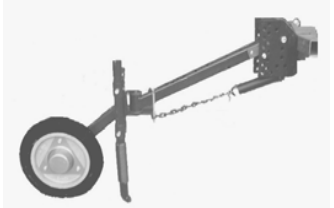
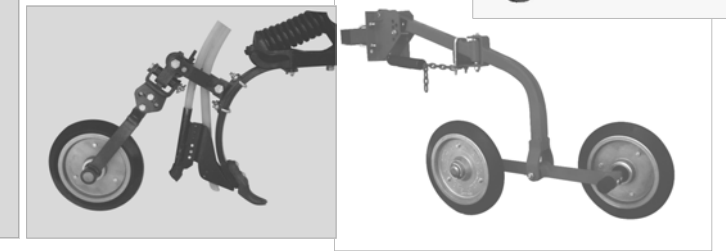
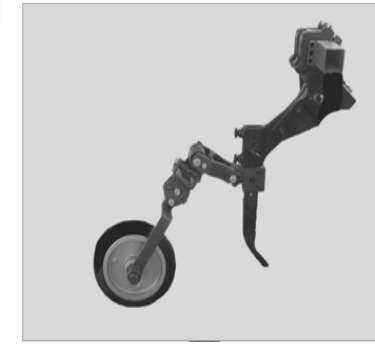
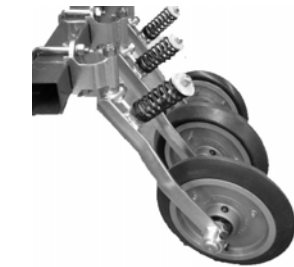
ACCESSORIES

VISIT [www.manutec.com.au](http://www.manutec.com.au) for detailed info on all Manutec press wheels and coulters

## PRESS WHEEL ASSEMBLIES



- Walking Wheels
- Gangs
- Tyne Mounts
- Swivel Assemblies
- Inframe Assemblies
- Rocker Assemblies
- Seeding Options
- DIY Solutions



- Suit a range of mounting options
- Large Range of tyre options
- All units standard with Heavy Duty Stubs and Bearings

## GAUGE WHEELS

## DISCS

## HUBS AND STUBS



## COULTERS

- Twin
- Single
- Fluted
- Plain



## GANG REBUILDS



## PRESS WHEELS



Wheels available with hubs, bearings and bushes in 15", 16" and 18" variants



## SPARES & ACCESSORIES



**MANUTEC PTY LTD. 30 JONAL DRIVE. CAVAN. SOUTH AUSTRALIA. 5094**  
**PH: (08) 8260 2277 FAX: (08) 8260 2399 EMAIL: [manutec@manutec.com.au](mailto:manutec@manutec.com.au)**

**VISIT [www.manutec.com.au](http://www.manutec.com.au)**

# PRESS WHEELS

**Integral Hub**

- + Available in 15", 16", 18" Outer Diameters
- + Available with 40mm Round/Square Axles
- + Heavy Duty Tapered Roller Bearings/Marine Grade Triple Seals
- + Only Available in Alloy
- + Heavy Duty Over cap Available (15"/16" Only)



CENTRE OPTIONS

CENTRE OPTIONS



**HT Pattern Centre, with Standalone Cast Iron Hub**

- + Available in 15", 16", 18" Outer Diameters
- + Available with 40mm Round/Square Axles
- + Heavy Duty Tapered Roller Bearings
- + Available in Alloy or Steel Centres
- + Heavy Duty Steel Over caps Available



**Nylon Bush Centre**

- + Available in 15", 16", 18" Outer Diameters
- + 15" & 16" with 25mm Bore (1")
- + 18" with 32mm Bore (1 1/4")
- + Only Available in Alloy Centre
- + Designed for use in Gangs in Conjunction with Pillow Blocks



**Sealed Bearing Centre**

- + Available in 15", 16", 18" Outer Diameters
- + Standard 25mm Sealed Roller Bearings
- + Available in Alloy or Steel Centres
- + Also Available in 16mm Variant
- + Other Variants Available to suit different bearing types



**BMW Pattern Centre to suit BMW Cast Iron Hub**

- + Available in 15", 16" Outer Diameters
- + Only Available in Alloy

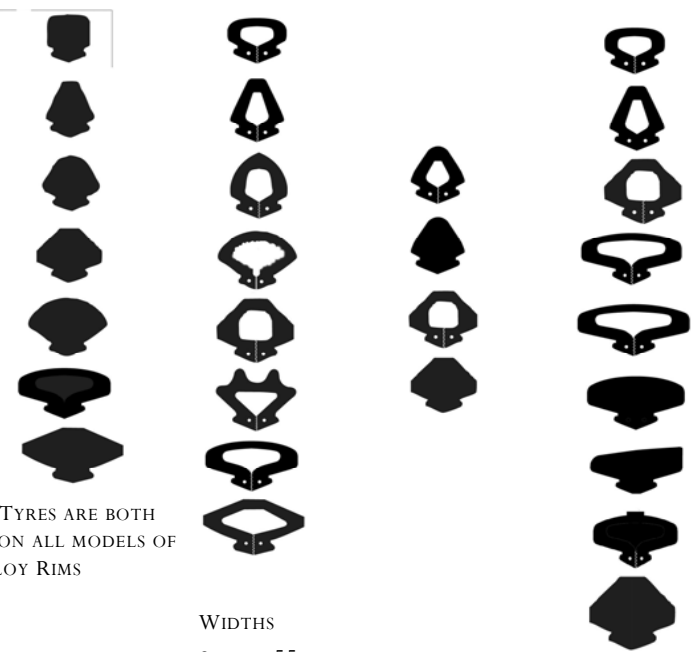
**WHEEL & TYRE OPTIONS 15", 16" & 18" WHEELS**

	15"	15"&18"	15"	15"	16"	18"
	HI-FLEX TYRE	SEMI-SOLID TYRE	SOLID TYRE	S/P TYRE	SOLID & S/P TYRE	SOLID & S/P TYRE

WIDTH

- 55mm
- 55mm
- 55mm
- 70mm
- 70mm
- 80mm
- 80mm
- 90mm
- 100mm
- 110mm
- 110mm

TYRE OPTIONS



NOTE: 15" & 16" TYRES ARE BOTH DESIGNED TO FIT ON ALL MODELS OF MANUTEC 15" ALLOY RIMS

**SHAPES**

- FLAT
- WEDGE
- ROUND
- DOME
- VEE

**WIDTHS**

- 55MM
- 70MM
- 80MM
- 90MM
- 100MM
- 110MM
- 120MM

Visit: [www.manutec.com.au](http://www.manutec.com.au) or contact Manutec for a detailed tyre information and selection pack.

**Tyres to Suit:**

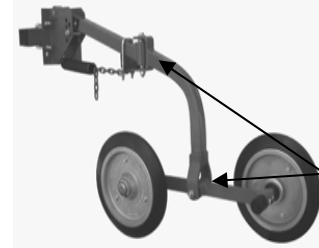
- Wet Conditions
- Dry Conditions
- Sandy Soils
- Loam Soils
- Self Mulching Soils
- Combination Soils
- Sticky Soils
- Moisture Seeking
- Moisture Harvesting
- Single Banding
- Double Banding
- Spread Banding
- Red Clay
- Grey Clay
- Narrow/Knife Points
- Wide Points/Sweeps
- Irrigation
- Beds
- Wheat, Barley, Oats
- Cotton, Sugar Cane
- Vegetables/Trees
- Other Grains, Canola
- Pasture, Feed Crops

# PRESS WHEEL ASSEMBLIES

Detailed brochures are available for each assembly type, contact Manutec for copies

SWIVEL ARM ASSEMBLIES

**Adjustable 6" to 13" Spacings**



Wider Spacings available on request

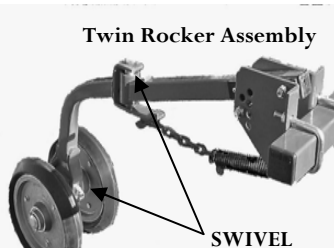
**Twin Walking Wheel Assembly**

Above: Twin Walking Wheel with 15" Wheels  
Right: Single Walking Wheel with 18" Wheel

**Walking Wheel Assemblies**

Rear Mounted systems in single and twin variants. See 15", 16", & 18" tyre profiles on Page 2 for full range of tyre options. 3", 4" and diamond mounting options.

**Adjustable 6" to 13" Spacings**



**Twin Rocker Assembly**

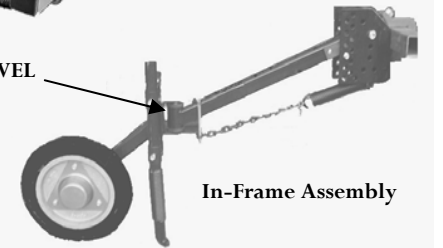
SWIVEL

**Left: Twin Rocker Assembly**

Rear Mounted System pictured with 15" 80mm Wedge Semi-Pneumatic Tyres. See 15", 16", & 18" tyre profiles on Page 2 for full range of tyre options. 3", 4" and diamond mounting options.

**Right: In-Frame Mounted Single Swivel Arm Assembly**

Pictured with 15" Wheel and Optional Seed Boot. 3" and 4" mounting options.



**In-Frame Assembly**

**In-Frame Assembly with Seeding Options**



**Gang Assembly**

**Left: Press Wheel Gangs**

Quick Release Gangs available in a range of tyre profiles and machine spacings. Easily fitted to a large range of machine types and suited to a variety of sewing conditions. See 18" tyre profiles on Page 2 for full range of tyre options. Pictured left 6 wheel variant on 7.2" spacings with 80mm Wedge Semi-Pneumatic Tyres, with Mounting Arm.

Gang and Harrow connecting arms available to suit QR Mounting Arms



15" Wheels only

Above: Quick Release Mounting Arms

**Rear Mount Swivel Assembly**

Above: Individual Rear Mount Swivel Assembly Mounted at the rear of the machine either on a fixed or detachable tool bar. Mounting arms also available. 3" Mounting.

GANG ASSEMBLIES

TYNE MOUNTED ASSEMBLIES

COULTER ASSEMBLIES



**Adjustable**

**Left: Adjustable Tyne Mount Assembly**

Multiple adjustment points, adaptable to a large variety of different tynes. See 15", 16", & 18" tyre profiles on Page 2 for full range of tyre options.



**Fixed**

**Left: Fixed Tyne Mount Assembly.**

Fixed angle Tyne Mounted Assembly to suit flat on "C" tyre only (pictured left) See 15", 16", & 18" tyre profiles on Page 2 for full range of tyre options.

**Adjustable**

Above: Adjustable Tyne Mounted Assembly to suit flat on tyre  
Right: Adjustable Tyne Mounted Assembly to suit edge on tyre.



**Semi-Adjustable Tyne Mount Assembly**  
Central Adjustment point only. Available to suit edge on and flat on tynes, wide long throat for oversize tubes and double shooting. Finite spring adjustment. See 15", 16", & 18" tyre profiles on Page 2 for full range of tyre options.

**Semi-Adjustable**



Twin and single trash coulters are available in a range of disc types and disc sizes, contact Manutec for specialised coulter information packs. Information also available at [www.manutec.com.au](http://www.manutec.com.au)